

ARD studio

Company Profile



# ARD Studio

Imaginative. Innovative. Inspiring





ARD Studio was founded in the year 2013 by Architect Ricky Doshi, a visionary with expertise in innovative designs and global exposure. He has received tutelage under some of the best architects in India & Abroad.



ARD Studio's foundation lies in delivering a sustainable, eco-friendly end product, perfection of drawings and execution, promising excellence in their work by giving attention to details. ARD Studio is a design studio that integrates all natural forces like sun, wind and rain to generate an all-round design solution and enhance the performance of their designs.

ARD Studio's design mantra is 'minimalistic, yet bold'.

The services offered by the studio are as follows:

- Architecture Design
- Planning
- Project Management
- Interior Designing

The Studio has completed many prestigious projects including High-End residential buildings in Matunga, interior designing for Godrej Towers, along with few properties in Walkeshwar and Peddar road within a short span of time. They understand the versatility of the client and adapts to their requirements, which makes them an ideal team that offer planning, designing and execution of architecture and interior designing services.

ARD Design Studio believes in optimizing space as per the requirements of the customer. They create space that is functional, unique and innovative.

Brief about the founder: Ar. Ricky Doshi, an undergraduate from L.S Raheja School of Architecture, Mumbai. He pursued his Master's degree in Architecture from USA in June, 2011.

ARD Studio initially started as a side arm of M/S Doshi Associates, a 30 + year old firm in the field of Architecture & Interior Design headed by his father Ar. Bakul Doshi.

ARD Studio has played an indispensable role in the completion of several residential Architecture projects, high-end residential, commercial, corporate interior projects and managed projects (Project Management) in timely completion and within the stipulated budget.

Vision & Design mantra: ARD studio aspires to bring designs and technologies which are ahead of its time, since a structure stands out for 60-70 years, hence the design is primarily conceptualized to cater for the future needs.



## INTRODUCTION

We create space. Space that is functional, unique and innovative. Space, optimized to your liking by our skills.

Founded by Ar. Ricky Doshi, a visionary with expertise in innovative designs and global exposure who has received tutelage under some of the best architects in India & Abroad.

Understanding the versatility of the client and adapting to their requirements, makes us an ideal team that offer planning, designing and execution of architecture and interior designing services.





## VISION & MISSION

Taking forms and shapes to the streets to improve the view.  
Design optimized spaces as per the brief and ensure client's satisfaction.

Represent designs as an expression of energies.

Strive on advanced skills and cutting edge technology.



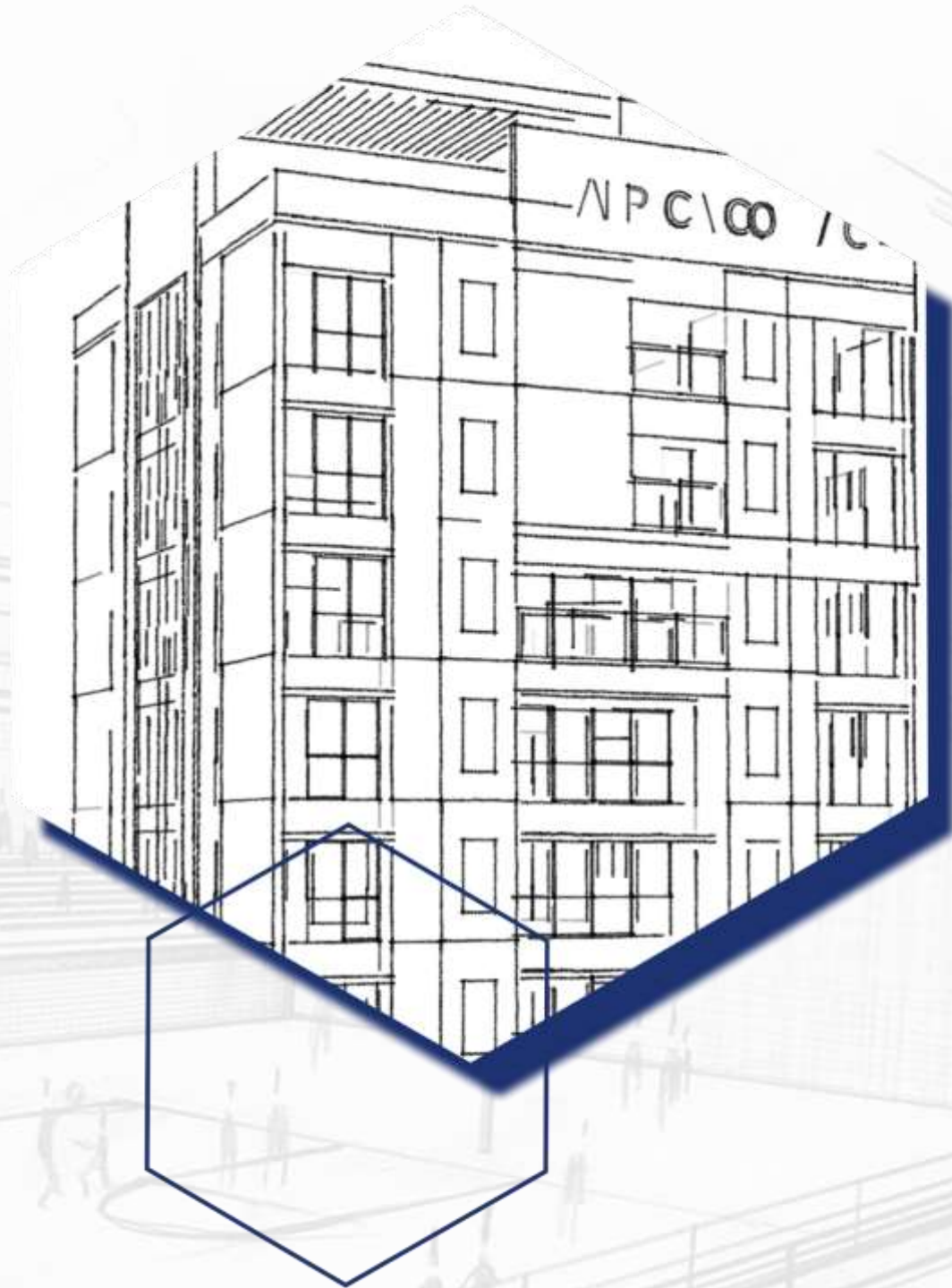
## THE ARD PROCESS

Our functions include Strategizing, Programming, Planning, Designing , Technical and Construction .

We bring together Planners, Designers, Project Architects and Construction Consultants under one roof.

The client only has to deal with the studio to be in touch with all the aspects since we act like an efficient interface.





## WHY ARD?

- Innovation
- Creativity
- Discipline
- Optimization
- Personalization
- Timely Delivery
- Precision
- Global standards
- International Exposure
- Expert Supervision

A hand-drawn architectural sketch of a building facade, featuring a grid of vertical and horizontal lines. The drawing is composed of multiple parallel lines, creating a sense of depth and perspective. The word "Projects" is overlaid in the center of the sketch.

Projects





## P.G House – Design & PMC

ARD's signature project.

First Project in Matunga to use 'DOKA' technology.

Limited space, Different floor plan for every tenant.

A design that reflects the future and stands out.

Rich materials, Finest techniques at an affordable price

Status : Completed







## Piroj Palace – Design & PMC

A challenging redevelopment project since the plot was oddly shaped.

Client with specific demands and had limited capability to invest.

The first of its kind building to use 'Mivan' technology.

The outer shear wall finish and the dimension precision were uncanny.

The building stands out due to the exterior finish achieved.

Status - Completed.







## Bliss- Design

Ongoing residential building project in Matunga.

Involved at a very late stage, when 12 out of 15 slabs were already casted.

The original elevation was mediocre hence, ARD was commissioned to redesign a striking façade.

The striking feature are the balconies and flower beds were uniquely designed.

Status: Completed







## Africa Cottage – Design & PMC

The challenge of building was a 7 storey within the frame of rules & regulations within an extremely small plot.

The design concept is an enhanced cube and beautiful.

Scaled and Tessellated according to the site conditions.

The design provides complete privacy for the tenants.

Status - Completed







## Induvilla – Façade & Lobby Design

Designing, excavation, foundations complete.

The design is modern & timeless.

Elevation is approved by the client,  
Still at the initial stages of the project.

Status: Finishing Stage







## Mankar – Design & PMC

Another residential project in Matunga.

The project is constructed by Endemic Realty.

ARD'S role is to design the facade,

lighting design for the facade, compound design and common areas and interiors

The elevation has been finalized, and the building has come up to the plinth level

Status: Completed.







## Bhupendravilla – Design & PMC

Another redevelopment high rise residential project in Matunga.

Symmetrical Plan, utilizing the concept of Cubism as per the client's brief.

All the elements of the building (chajjas, balconies, refuge areas) designed using the concept of Cubism

The concept carried on to the parking podium to give it complete look.

An ultra-modern design which was highly appreciated by the client.

Status: Awaiting Approvals







## Bakul Doshi – Interior Design

Ricky Doshi's Apartment.

Ultra modern and high quality material and design.

Renovation and experiments with designs.

USP is the open kitchen concept, and the play of space and light that gives the property a very unique ambience.

Reflection of ARD's expertise, artistry and innovation.







## Anil Doshi - Interior Design

Interior Project for a very close associate.

The apartment is a part of Piroj Palace, an ARD Project. The brief was to create a design that reflects simplicity.

The theme of house revolves around white.

Furniture and walls are white while doors, wall paneling are painted in dark veneers

Complete Italian marble flooring & LED lights throughout the house along with other energy saving measures.

Status: Completed





## Piroj Palace Sample Flat - Interior Design

A Part of Piroj Palace project.

Idea was to create a sample flat for the potential buyers.

The concept was of simple modernism, straight lines, use of indirect lighting which gave the flat a very homely feel, simplicity and elegance.

The entire apartment was done in yellow lighting (LED lights for cost effectiveness).

Status: Completed







## PG House - Interior Design

The brief was to incorporate simplicity and uniqueness.

The client's son was fond of horses, hence, the false ceiling of his room was designed in the shape of a horse shoe.

One room is dedicated for their pets and one for worshipping

A unique challenge since ARD had to integrate different designs into a single concept

Status: Under Construction





## Chembur - Interior Design

Independent Designing without client's interference.

ARD presented a very modern looking, yet homely design for the large apartment.

Meant for everyday life with easy maintenance yet very aesthetically pleasing (2500sft; 4BHK).

Duration: 8 months







## Godrej Towers - Interior Design

The property had to resemble a contemporary palace

Played with the designs and materials as per client's taste

Used ornamental grills and fit it into the modern design concept

The challenge was to meet the deadline since the society had many obscured rules

Duration: 6 months





## Peddar Road – Interior Design

First rental property to be designed.

The budget was the challenging aspect.

We were able to achieve optimum space and quality through premium materials.

The client was contented with the final outlook and the reasonable cost

Duration: 4 months.







## Walkeshwar – Interior Design

Design has a contemporary style with the use of the "Cubism" concept.

Play of materials and lighting is very cheerful, with the provision of mood lighting to enhance the interiors.

Challenge was carrying out work when the client was already living in the same apartment.

Independent designing void any kind of client interference.

Duration : 2 months







## Rustomjee Malad – Entrance Lobby

Approached by the society committee.

They were awed by the design and immediately handed the contract.

Some tweaking in the material selection had to be made to fit the design into the client's budget.

Proposal finalized, To start soon







## Songad Bungalow

Load Bearing Structure; Extension of the Existing Structure & New Interiors

Getting work done on the existing structure was a challenge since the strength of the old structure was always questionable.

ARD succeeded in reinforcing the strength and make the bungalow aesthetically pleasing.

Duration: 8 months







Residential project in  
Queens, NYC

Status : Under Construction





Radial design concept for the dairy farm @ Murbad

The brief included design for a resort along with the milking centre

The brief included designing sheds for 1000 cows with separate grazing and pasturing lands

The brief included a separate space for waste management

Status: Conceptual



## CONCEPTUAL DESIGN OF DAIRY FARM AT MURBAD





## Upcoming Projects

Design Concept for Upcoming Mixed use Residential Development @ Matunga (E).

G+2 Retail; 8 residential floors; top 2 floors commercial office.

1<sup>st</sup> Design concept is of extended blocks forming sharp corners and terrace spaces.

2<sup>nd</sup> Design concept is of a circular space along the corner taking the shape of the plot itself.

Status : Conceptual





Design Concept for Upcoming Residential  
Development @ Bengaluru for Kumar  
Developers

Stilt + 10 residential floors

Design concept is of cube boxing  
extended on the side elevations

Full height windows on the front façade

Façade Design varies on alternate floors

Status : Conceptual



OPT-01 VIEW-01

ARD STUDIO





# Bungalow township at Shahapur

Master planning of individual bungalow plots ranging from 1BHK, 2BHK & 3BHK.

A waterfront feature alongside a reservoir built as a rain water harvesting system for sustainability of the projects

Status : Concept







A rooftop lounge in Malad  
Concept of a roof top  
cabana with central bar

Status : Concept







VZTHg635 - 01

With growing popularity of nucleus families, there has been a tremendous demand for small sized apartments that fit it a family of 3 or 4. Looking at the current scenario, many couples also opt to concise their families to only 2 people which has increased demands for studio type apartments in many of metropolitan cities. Going one step further with a studio style living, we find many people who are constantly travelling across the country or the globe for business. Many people are constantly relocating due to their business commitments.

This tiny house is self-sustainable which provides every luxury and comfort needed to live-in. At the same time, the house can be easily moved to any location of preference by towing it away with any vehicle. The clients are a young couple who are archaeologists, who constantly travel around the country for new research and archaeological findings. Each project lasts from 6 months to 2 years, making it impossible for them to make one city their base. Thus the unique concept of a movable house of only 250 sq.ft area deems to be a perfect solution for the young couple.

The site selected for this project is in Lonar, Maharashtra, near the Lonar lake, which is famous archaeological site in Maharashtra. The design concept is that of a minimalistic contemporary cabin which has all the comforts and luxunes of a high-end apartments bound together in a 250 sq.ft compact space. The house consists of a living area, dining table, open kitchen, modular toilet and a bedroom with a dedicated work space area. Minimal furniture along with storage is designed in such a way that compliments the minimalistic nature of the exterior design.

The house is self-sustainable with provision of solar panels on the roof for generation of clean energy, and a rain water harvesting tank at the base of the structure which filters the rain water that can used for domestic purposes. The organic shape of the tiny house cabin with sloping walls allows the rain water to flow down smoothly into the grates that collects the rain water & stores it in the tank. The tank has been conveniently divided into 2 compartments, one for storage of rain water and the other for storage of water from the local municipal body.



**TINY HOUSE**



LIVING ROOM



KITCHEN/PANTRY



WORK SPACE



BEDROOM

Competition Entry for a Tiny House.

Status : Competition Entry

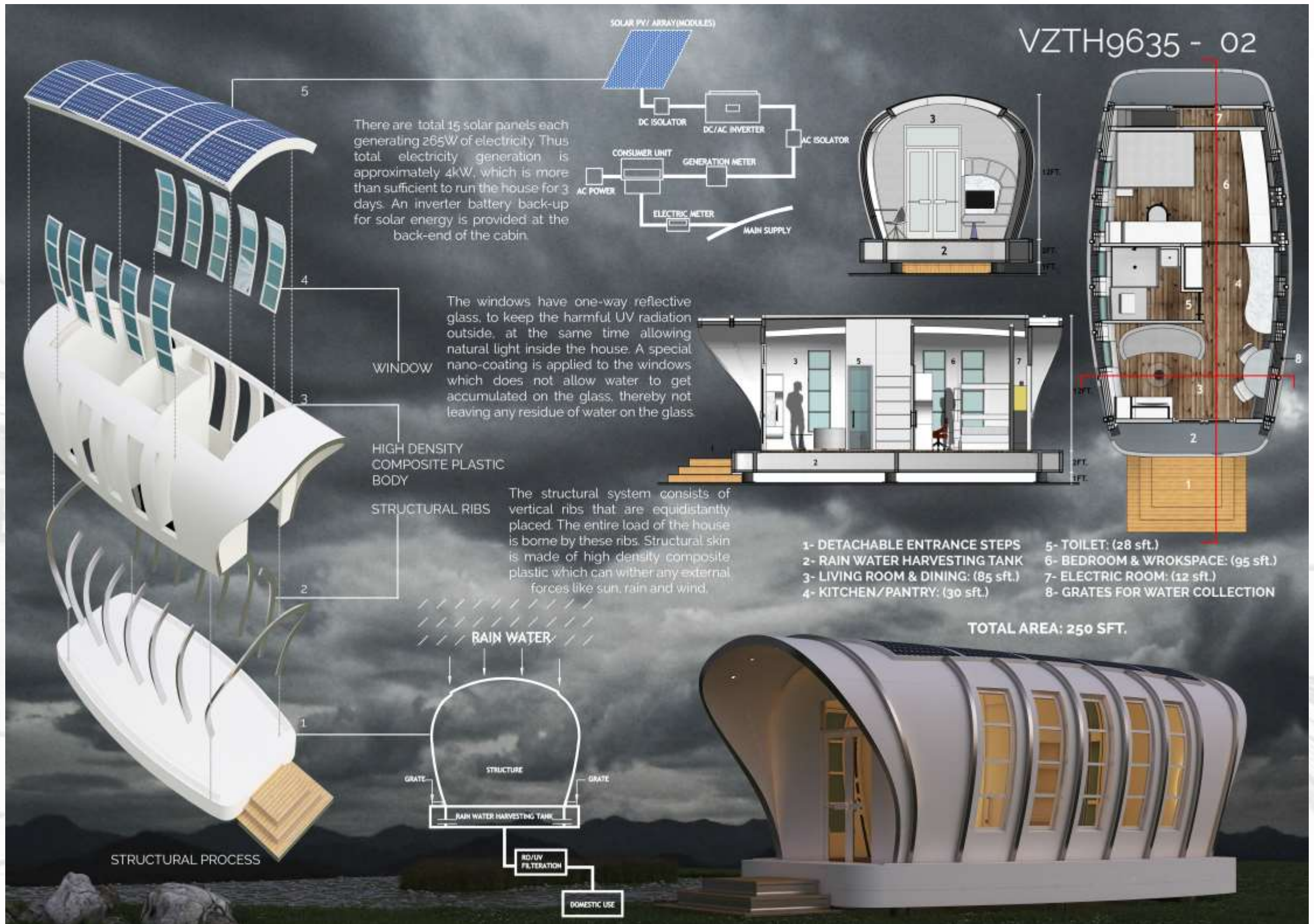




VZTH9635 - 02

Competition Entry for a Tiny House.

Status : Competition Entry





Competition Entry  
for a Skyscraper  
Design

Status : Competition  
Entry



**SYNOPSIS**

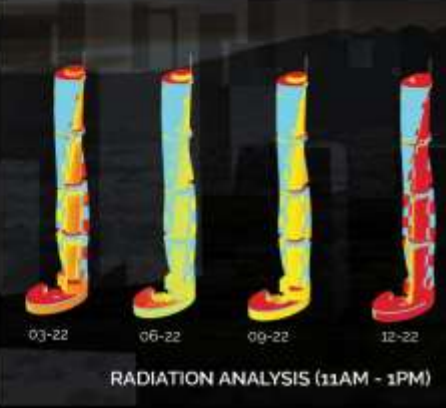
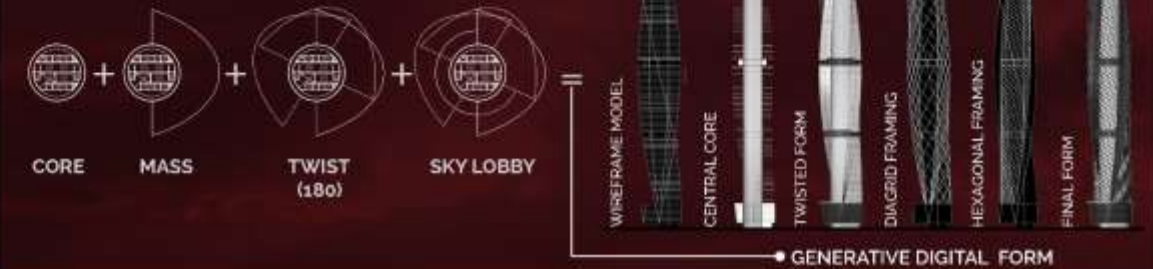
Skyscraper is an intensive building in which epoch-making technologies are generally combined with economy, society, culture and environment. In addition, it is a symbol of a nation and a barometer of a country's economic development.

There is a lot of vertical development seen in Mumbai, the financial capital of India. Whether it be a residential, commercial or a mixed-use development, skyscrapers are constantly changing the skyline of the city. But what the city lacks, is an icon a symbol, which is exactly this design aims to deliver. This mixed-use tower predominantly is focused on commercial development with parts being used as a retail and a luxury hotel. The skyscraper intends to promote open public spaces which is an integral part of the design. Situated on the northern-most tip of suburban Mumbai, which currently is the hottest property in the city, the mixed-use development allows to breathe through the congestion of the city overlooking approximately 100 sq km area of Sanjay Gandhi National park.



CIRCULATION DIAGRAM

**CONCEPT - FORM**

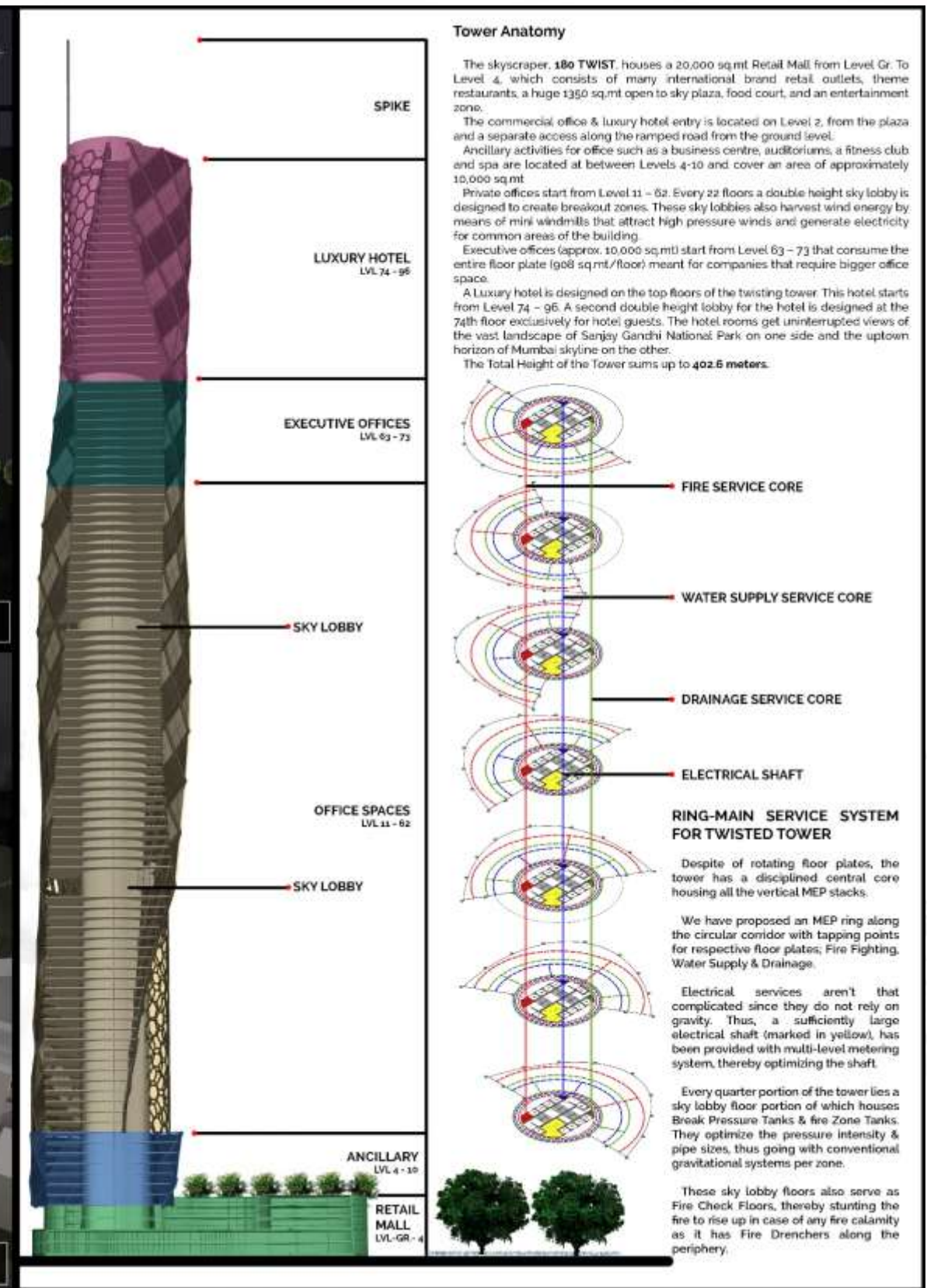
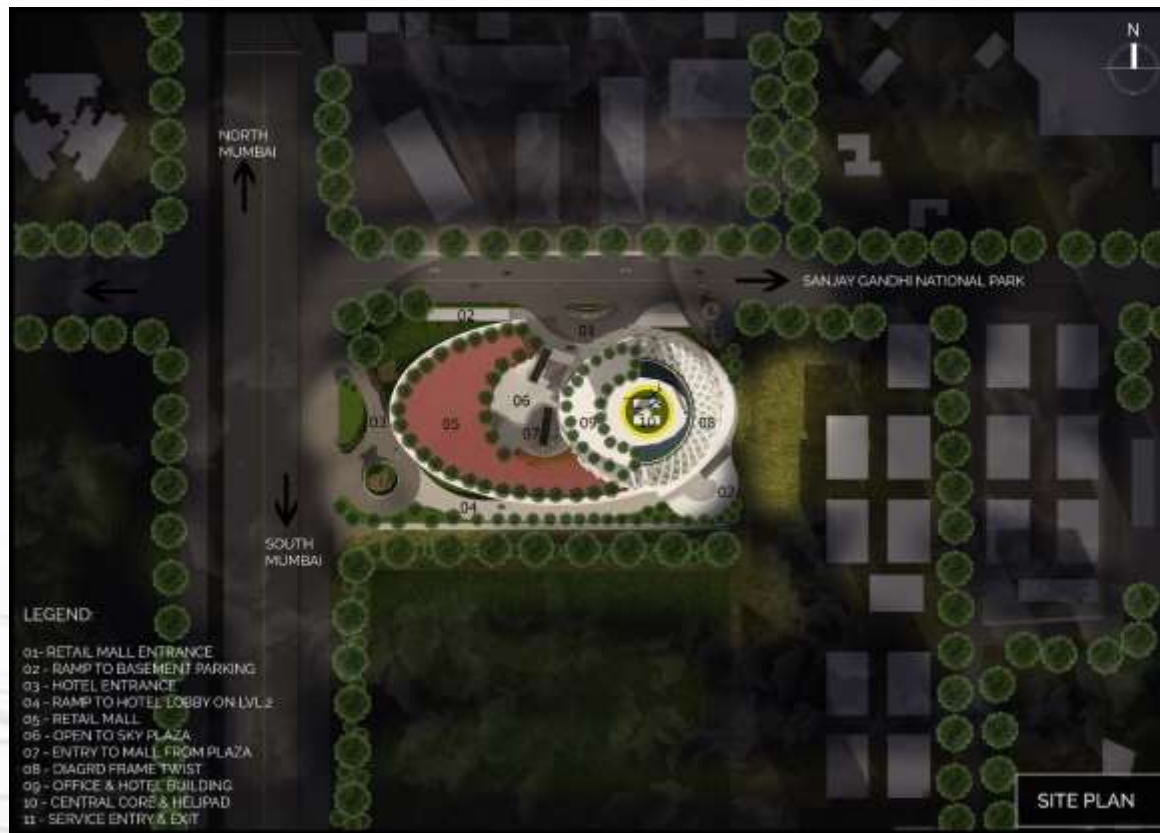


**180 TWIST**



Competition Entry  
for a Skyscraper  
Design

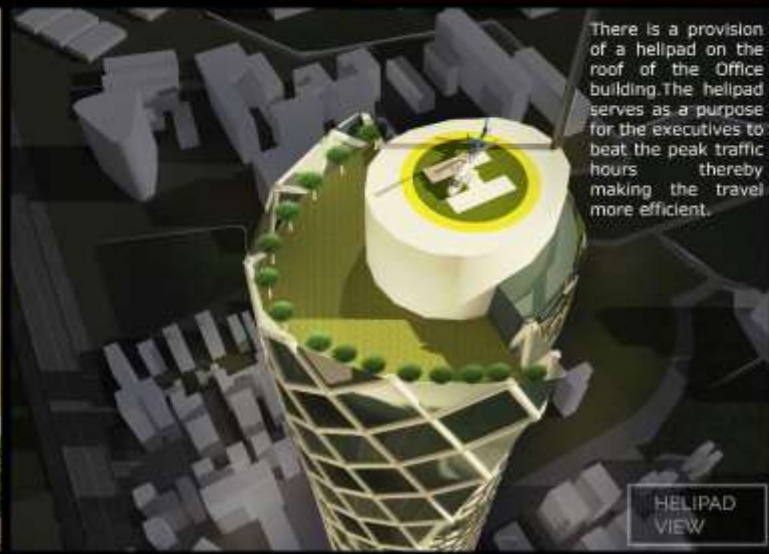
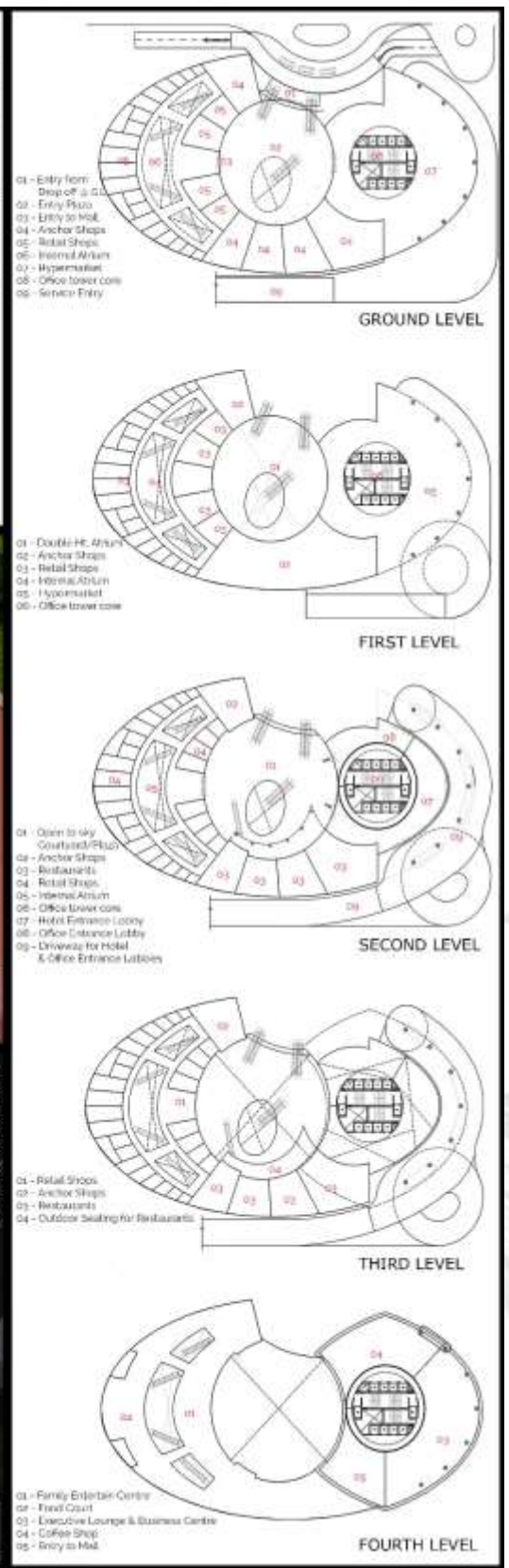
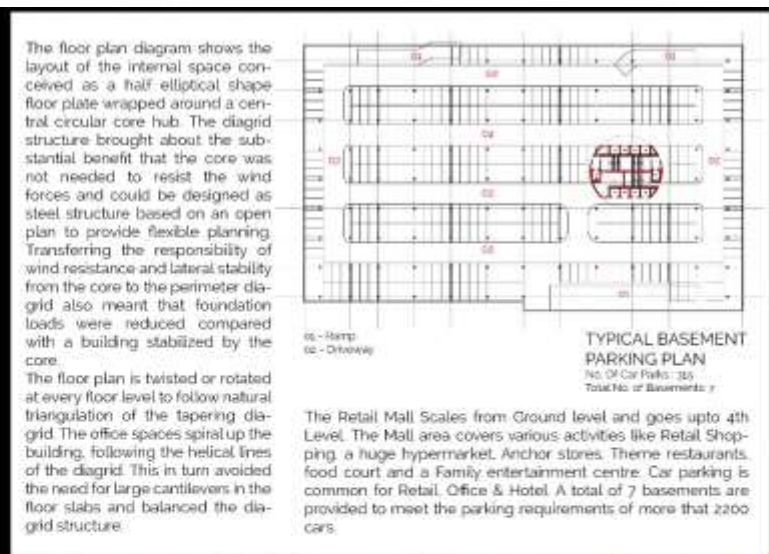
Status : Competition  
Entry





Competition Entry  
for a Skyscraper  
Design

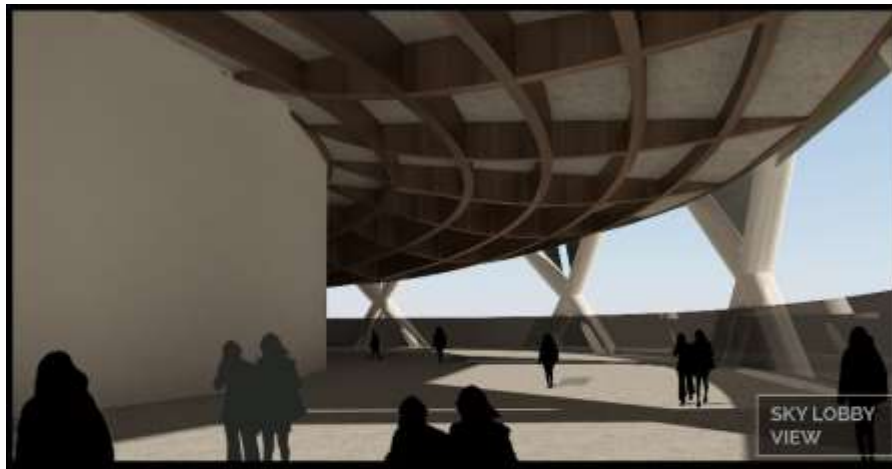
Status : Competition  
Entry



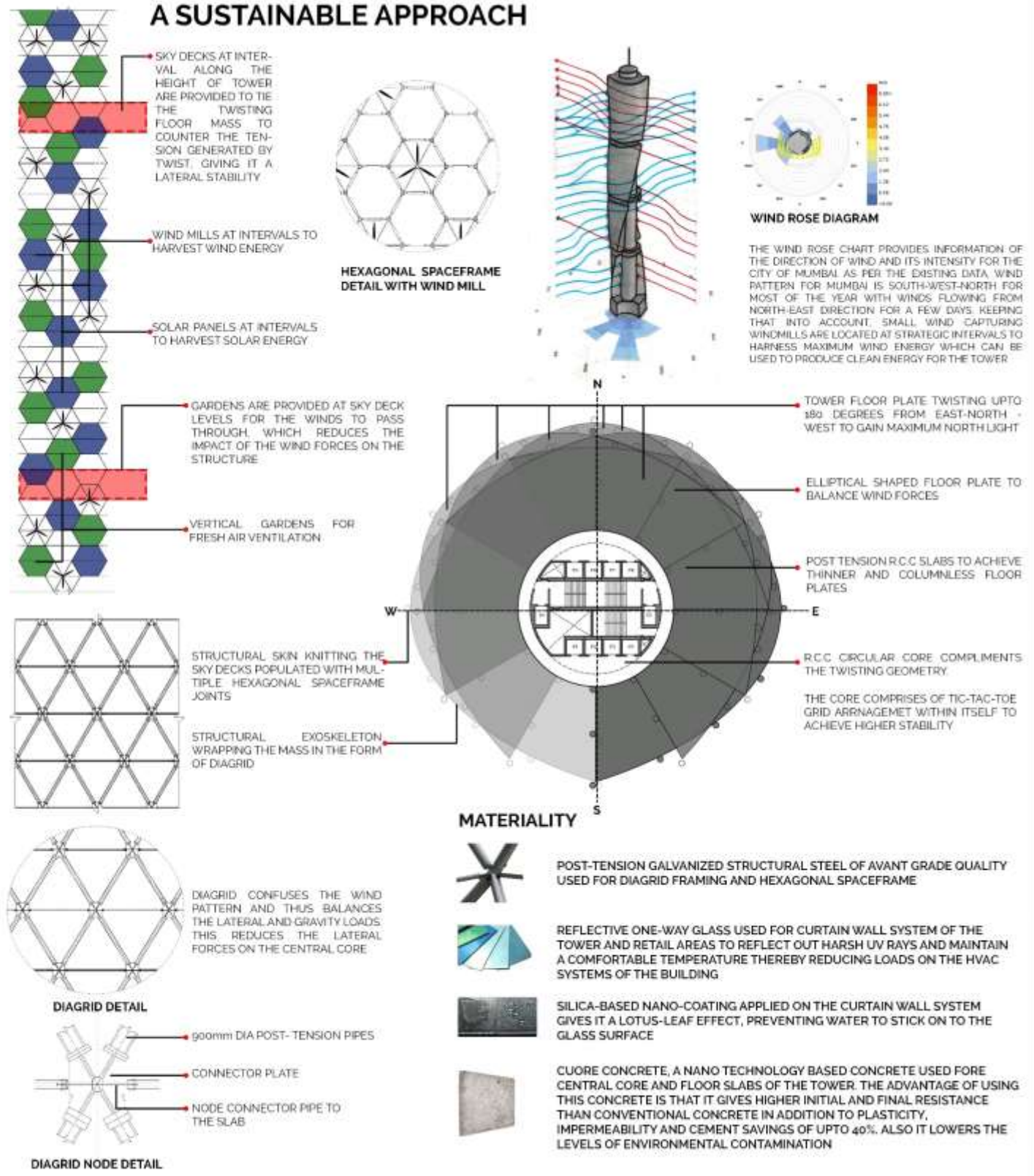


Competition Entry  
for a Skyscraper  
Design

Status : Competition  
Entry



## A SUSTAINABLE APPROACH







Residential tower Design in Versova for A & O Realty.

Multiple plan combinations as per design brief.

2BHK + 3BHK design.

Status : Competition Entry





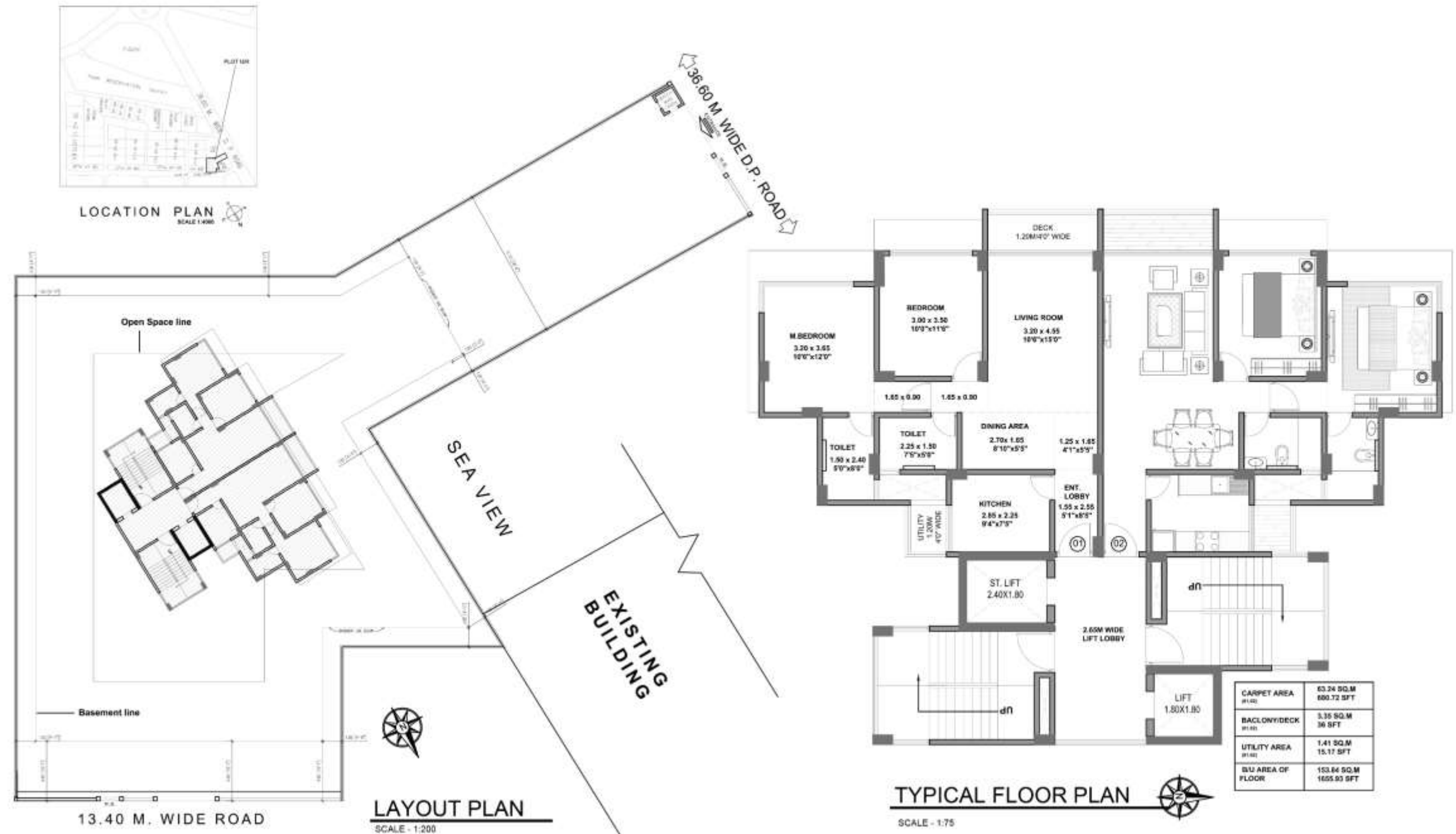


Residential tower Design in Versova for A & O Realty.

Multiple plan combinations as per design brief.

2-2BHK Design.

Status : Competition Entry





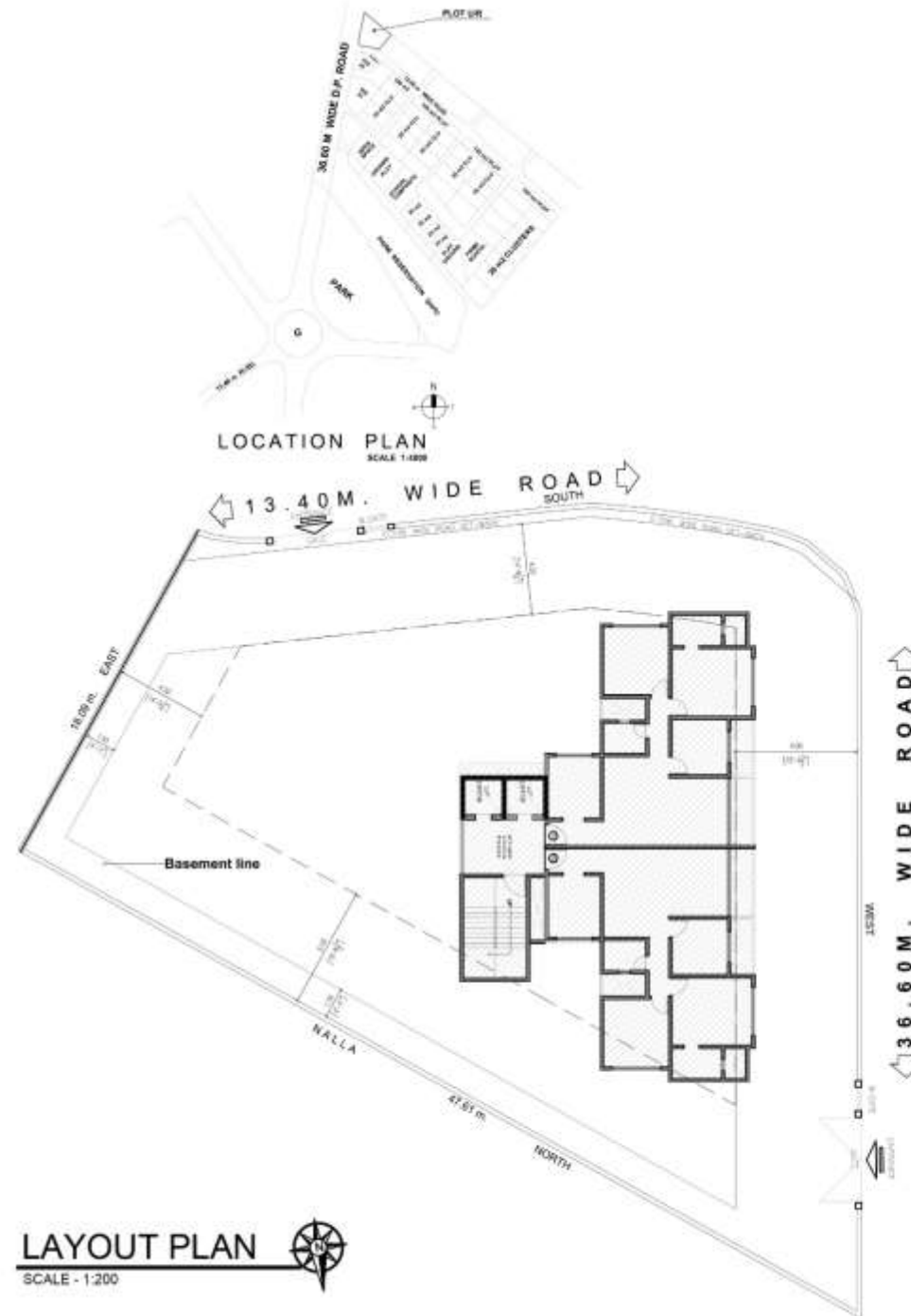


Residential tower Design in Versova for A & O Realty.

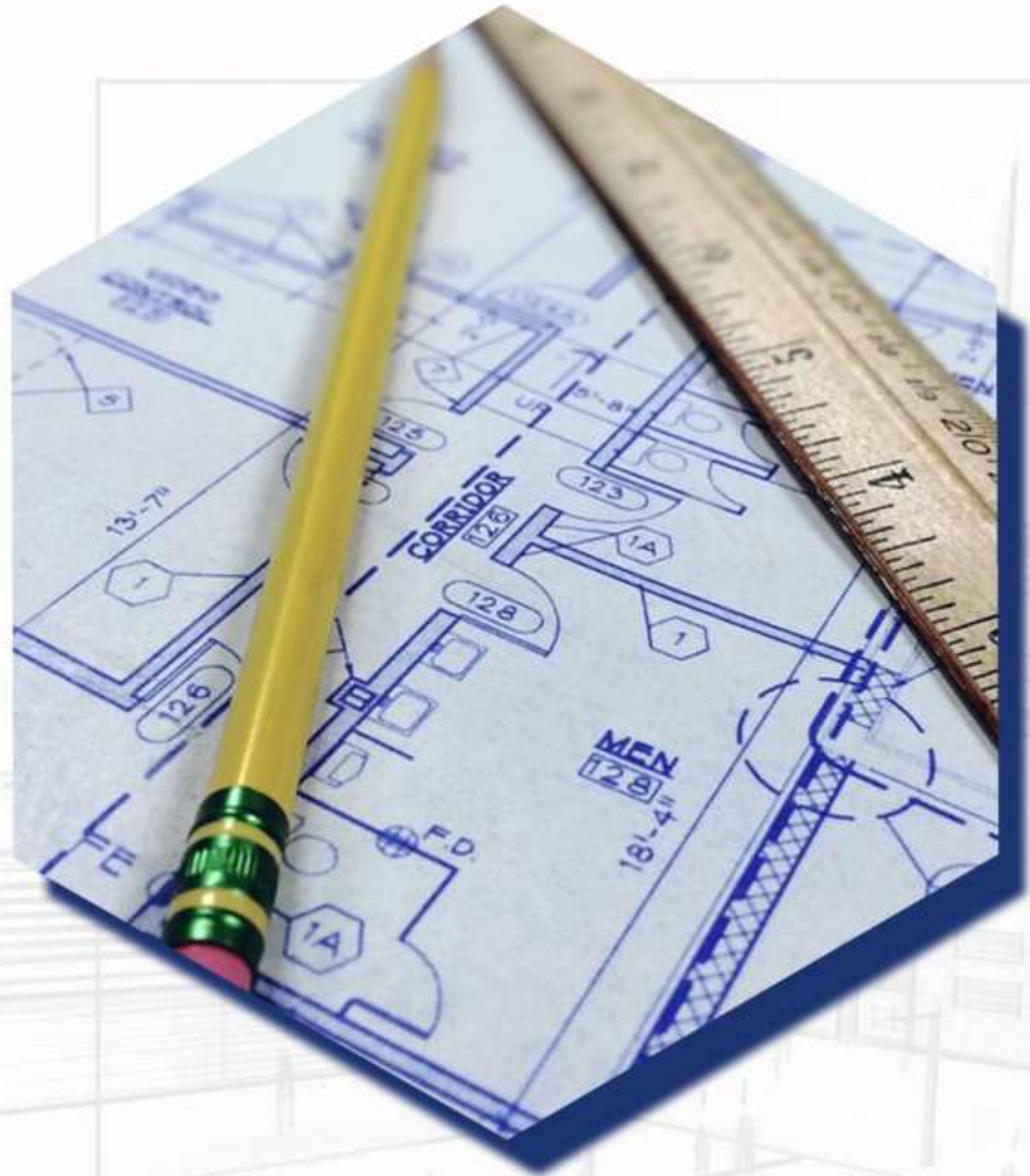
Multiple plan combinations as per design brief.

2-2.5BHK Design.

Status : Competition Entry







## Contact Us:

+91 22 2618 3922 | +91 98203 40929 | [info@ardstudio.in](mailto:info@ardstudio.in) | 102, Cello Plaza, V. P. Road, Near Railway Crossing, Vile Parle (West), Mumbai - 400 056